

LAST SPACE!



HILLTOP CENTER

15610 Woodinville-Duvall Rd | Woodinville, WA 98072

RETAIL FOR LEASE

AVAILABLE IMMEDIATELY:

- SUITE 109 | 1,315 SF
- Currently Built out as a Salon

RATE:

- \$24.00/SF, NNN

FEATURES:

- Great Signage
- Busy Neighborhood Strip Center
- Excellent Demographics
- High Traffic Counts
 - Woodinville-Duvall Rd @ 156th Ave = 28,874 VPD
- Space Not Suitable for Restaurant Use



Join Our Tenants:



DEMOGRAPHICS

	1 Mile	3 Mile	5 Mile
Population	4,910	41,951	150,118
Daytime Population	4,266	30,363	78,619
Income	\$130,061	\$112,383	\$108,854

Exclusively represented by:



Tom Wallin, CCIM
twallin@leibsohn.com
(425) 586-4648

Ron Waldbaum
rwaldbaum@leibsohn.com
(425) 586-4640

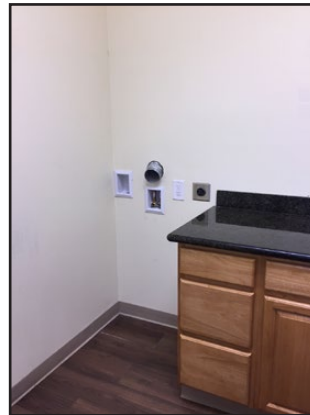
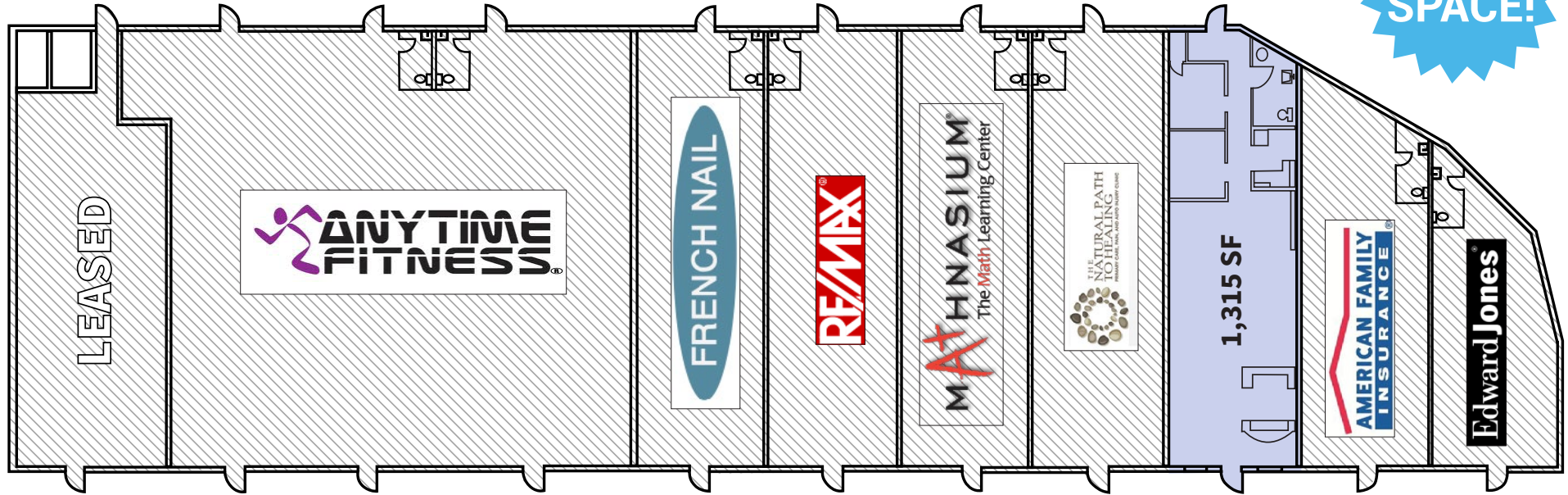


HILLTOP CENTER

15610 Woodinville-Duvall Rd | Woodinville, WA 98072

RETAIL FOR LEASE

LAST SPACE!



Exclusively represented by:



Tom Wallin, CCIM
twallin@leibsohn.com
(425) 586-4648

Ron Waldbaum
rwaldbaum@leibsohn.com
(425) 586-4640



The information contained herein has been received from sources we deem reliable. While we have no reason to doubt its accuracy, we do not guarantee it. You are advised to independently verify all information. | July 13, 2017